

Church of Fiães Monastery (National Monument)

Help us protect biodiversity!
A part of Melgaço's area is located in Portugal's most important preserved area, Peneda-Gerês National Park, which is recognised as World Biosphere Reserve by UNESCO.

HIKING & DISCOVERING

This is a linear route with around 16 km.

It starts in the village of Lamas de Mouro, next to the "Carvalho Shrine" (A), 'alminhas do carvalho' as are named by the locals. It's an artistic and religious vernacular heritage. Portugal is the only country in the world where shrines are part of cultural heritage, although they are much more common in the north than in the south of the country. Shrines (alminhas) are usually next to rural routes and crossroads; they are representations of Purgatory souls begging to hikers for prayers and alms for the departed, which, thus, denotes the cult of the dead.

Hiking along the village paths and the surrounding farming patchwork limited by old walls of loose rock, you follow a dirt track surrounded by brushwood that will lead you to an old Forest Ranger house.

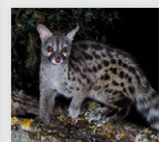
In this area, we highlight the added symbolic value of walking through a path known as "Way of the Dead" (B). It was named after funerals coming from further villages used it to reach the Parish Church before more recent roads were built. The deceased were taken by ox carts, taking them hours to reach the Parish Church.

With a small detour from the marked route, you will find one of Alto Minho's Monastery Route landmarks, Fiães

Monastery (C). After the extinction of the religious orders in 1834, the monastery's community was reduced to two monks, and a third religious, who was living with his relatives as he was infected with a contagious disease. The monastery underwent several restoration campaigns, which did not significantly alter its structure, which has retained, in sight, most of its medieval elements. The Church of Fiães as well as the remaining elements of the old monastery are classified as National Monument.

From here, the descending path takes you to the village of Cevide, the northernmost point of Portugal. Here you can visit border marker no. 1 with Spain (D) and pay a quick visit to the neighbouring country along the new walkway or 'Caneja do Contrabando' (Smuggling path).

Fauna: stag beetle (*Lucanus cervus*), genet (*Genetta genetta*), stone marten (*Martes foina*)



Geneta



Anémone-dos-bosques

Flora: Plymouth pear (*Pyrus cordata*), dogtooth violet (*Erythronium dens-canis*), three-leaved anemone (*Anemone trifolia*)



Pedestrian bridge PT/ES, Cevide



Border Marker n.º 1 PT/ES, Cevide

Did you know Melgaço is a sustainable tourist destination? It is a model of excellence for tourists and of well-being for locals.



discover
MELGAÇO
Portugal's most medical
nature destination

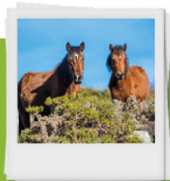
EN

MELGAÇO'S HIKING TRAIL NETWORK

PR 1
MLG
LAMAS DE MOURO - CEVIDE

PRECAUTIONS DURING THE TRAIL

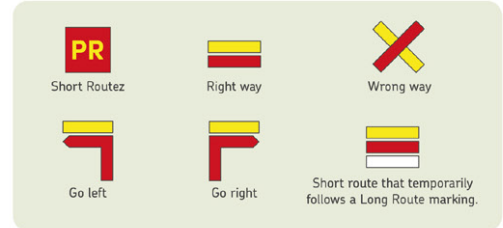
- Wear sensible clothes and shoes:** mountain boots, a hat and a raincoat.
- Do not disturb natural habitats.**
- Respect the signposted trail** and pay attention to the markings.
- Do not litter,** take the rubbish to the appropriate container.
- Respect private property.** Make sure all gates are closed.
- Do not make fire** and do not throw cigarettes on the floor.
- Leave nature unspoilt:** do not collect plants, animals or rocks.
- Do not start the trail** under severe weather conditions such as fog and snow.
- Avoid walking alone** in the mountain and always carry water.
- When there is high or very high risk of wildfires, **access might be limited.**
- Be polite** to locals.
- Beware of cattle.** Do not approach litters or cubs.



AND REMEMBER...
Take only memories and photos. Do not leave anything but footsteps.

(*) The route can be travelled at any time of year, but some precautions should be taken in summer due to the high temperatures, and in winter due to the low temperatures, the possibility of fog and snowfall and the accumulation of water in some sections.

TRAIL SIGNPOSTING



USEFUL CONTACTS

- Melgaço City Hall**
+351 251 410 100
- Melgaço Firefighters**
+351 251 402 599
- Peneda Gerês National Park**
Porta PNPGLamas de Mouro
+351 251 465 010
- Melgaço Police**
+351 251 404 960
- Emergency Line**
112

Pedestrian route registered and approved by:



Promoting organisation:



discovermelgaço.pt

TOURIST INFORMATION OFFICE

Praça da República, 133
4960-567 Melgaço
T. +351 251 402 440
E. turismo@cm-melgaço.pt

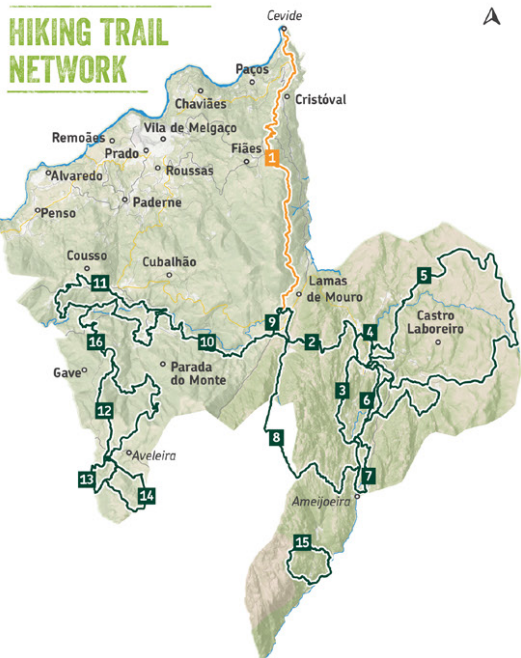
PENEDA GERÊS NATIONAL PARK PORTA PNPGLAMAS DE MOURO

Lugar de Porto Ribeiro
4960-170 Lamas de Mouro
T. +351 251 465 010
E. portadelamas@cm-melgaço.pt

Co-funded by:



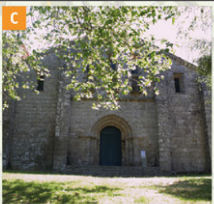
HIKING TRAIL NETWORK



- 1. Lamas de Mouro - Cevide 15,8 km
- 2. Castro Laboreiro - Lamas de Mouro 6,5 km
- 3. Castrejo 16,7 km
- 4. Interpretativo de Castro Laboreiro 5,2 km
- 5. Megalitismo 25,7 km
- 6. Rio Laboreiro 8,1 km
- 7. Inverneiras 6,0 km
- 8. Lamas de Mouro - Dorna 11,9 km
- 9. Interpretativo de Lamas de Mouro 4,4 km
- 10. Lamas de Mouro - Parada do Monte 9,3 km
- 11. Rio Mouro 18,4 km
- 12. Brandeiro 16,2 km
- 13. Vale Glaciar do Vez 4,3 km
- 14. Azeleira 6,1 km
- 15. Curro da Velha 7,3 km
- 16. Transumância 10,3 km

TECHNICAL DATA

- PR Linear
- Starting point:** Lamas de Mouro
42°03'04.0"N 8°11'58.3"W
- Ending Point:** Cevide
42°09'13.7"N 8°11'52.5"W
- Distance:** 15,8 km
- Duration:** 05h30 | 01h20 | 02h15
- Route Type:** Landscape-Cultural
- Difficulty:** Difficult
- Recommended season:** All year (*)
- Highest altitude:** 1062 meters
- Lowest altitude:** 77 meters
- Positive elevation gain:** 280 meters
- Negative elevation gain:** 1122 meters



FIÃES MONASTERY CHURCH
Landmark of Alto Minho's Monastery Route. The church, as well as the remaining elements of the monastery are classified as National Monument.



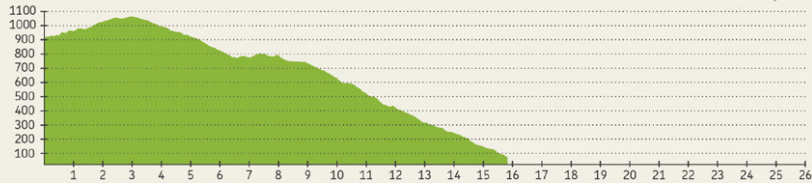
ALMINHAS DO CARVALHO
A vernacular artistic and religious heritage unique in the world, but very common in the north of Portugal. Popular representation symbolising a possible cult of the dead.



BORDER MARKER Nº. 1
A robust physical landmark that identifies the limit of the border line with Spain, between the banks of the River Minho and the River Trancoso, at the northernmost point of Portugal (in Cevide).

WAY OF THE DEAD
Before building new roads, funerals coming from further villages would use this route.

Elevation profile:



Edição: May 2024

CAPTION

- Starting point
- Trail marking
- Point of interest
- Milestone
- Primary roads
- Secondary roads
- Tertiary roads
- Preferred direction

How to read milestones:



Military Map of Portugal, sheets 1 and 4, 1/25000. IGeoE

500 m